

Runway Safety and Noise Improvement Oshawa Executive Airport

Information Package

As of August 18, 2025

PURPOSE AND OBJECTIVES

The goal of this project is to reduce the amount of noise emitted over the surrounding residential houses, and improve aviation safety. Below are bullet points that list the following measures for mitigating noise and improving safety:

Methods to Mitigate Noise:

- Increase the distance between aircraft
- Allow extra runway room for aircraft to fly higher
- Reduce the volume of aircraft

Method to Improve Safety:

- Adding runway length improves safety as it give aircraft more room for takeoff and landing rollout

THE OSHAWA EXECUTIVE AIRPORT WILL BE UNDERTAKING RUNWAY SAFETY AND NOISE IMPROVEMENTS ON RUNWAY 12 AND 30 STARTING ON AUGUST 18, 2025. FOR MORE INFORMATION, PLEASE REFER TO THE PLANS ON PAGES 8 - 13.

IMPORTANT DATES:

Work Area Z - Scheduled Start Date: August 18, 2025

Scheduled End Date: September 02, 2025

Work Area A - Scheduled Start Date: September 02, 2025

Scheduled End Date: October 10, 2025

Work Area B, C, D and E

This work will take place between September 2, 2025, and October 10, 2025, on an as-needed basis. We aim to have the NOTAMs published at least one day in advance.

Construction in work areas B, C, D and E will be completed during daylight hours only.

Contact Information:

Khizer Kamran

Project Manager – Airport

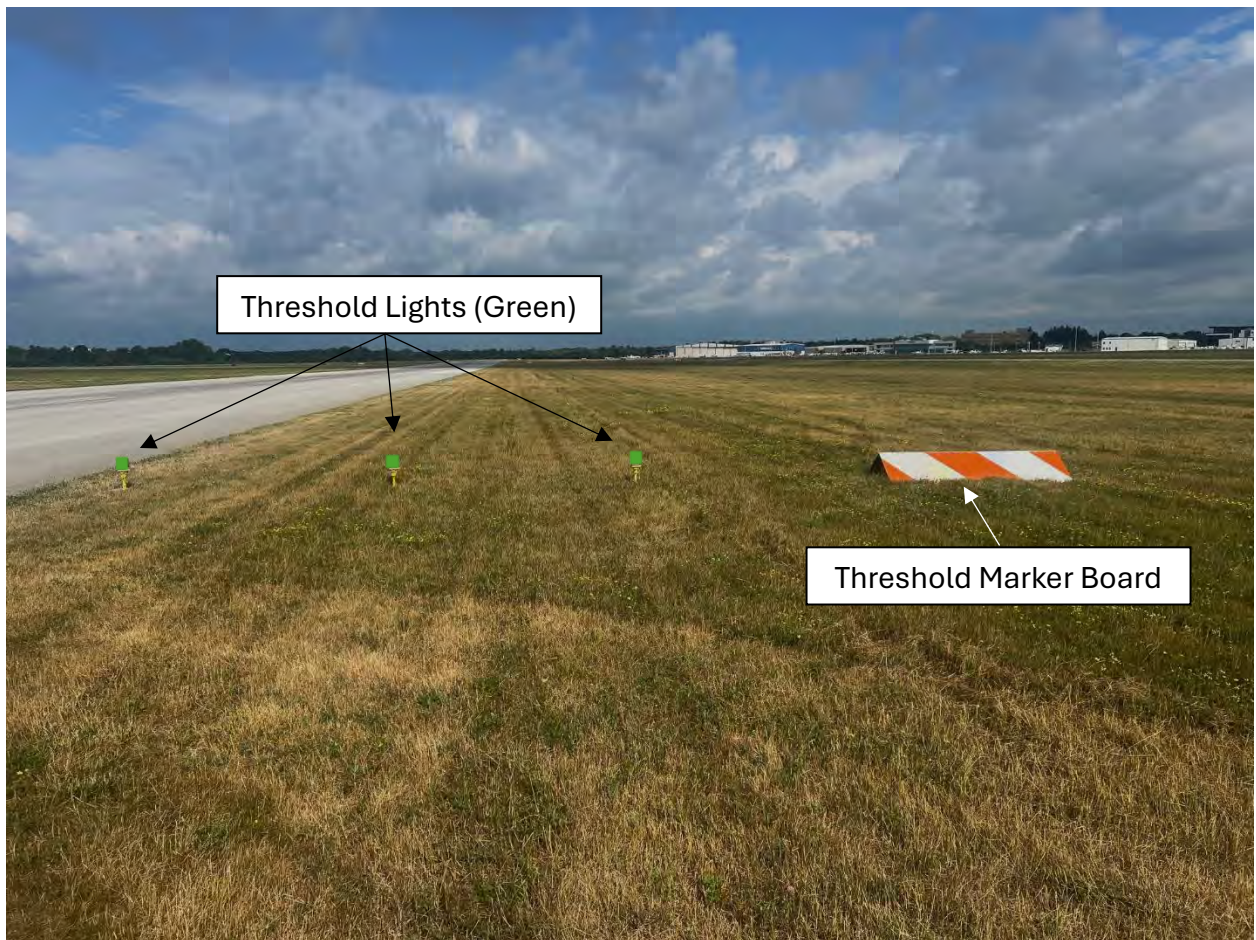
(905) 576 – 8146 ext. 3891

kkamran@oshawa.ca

WORK AREA IDENTIFICATION

1. ALL DISPLACED THRESHOLDS WILL BE MARKED AS FOLLOWS:

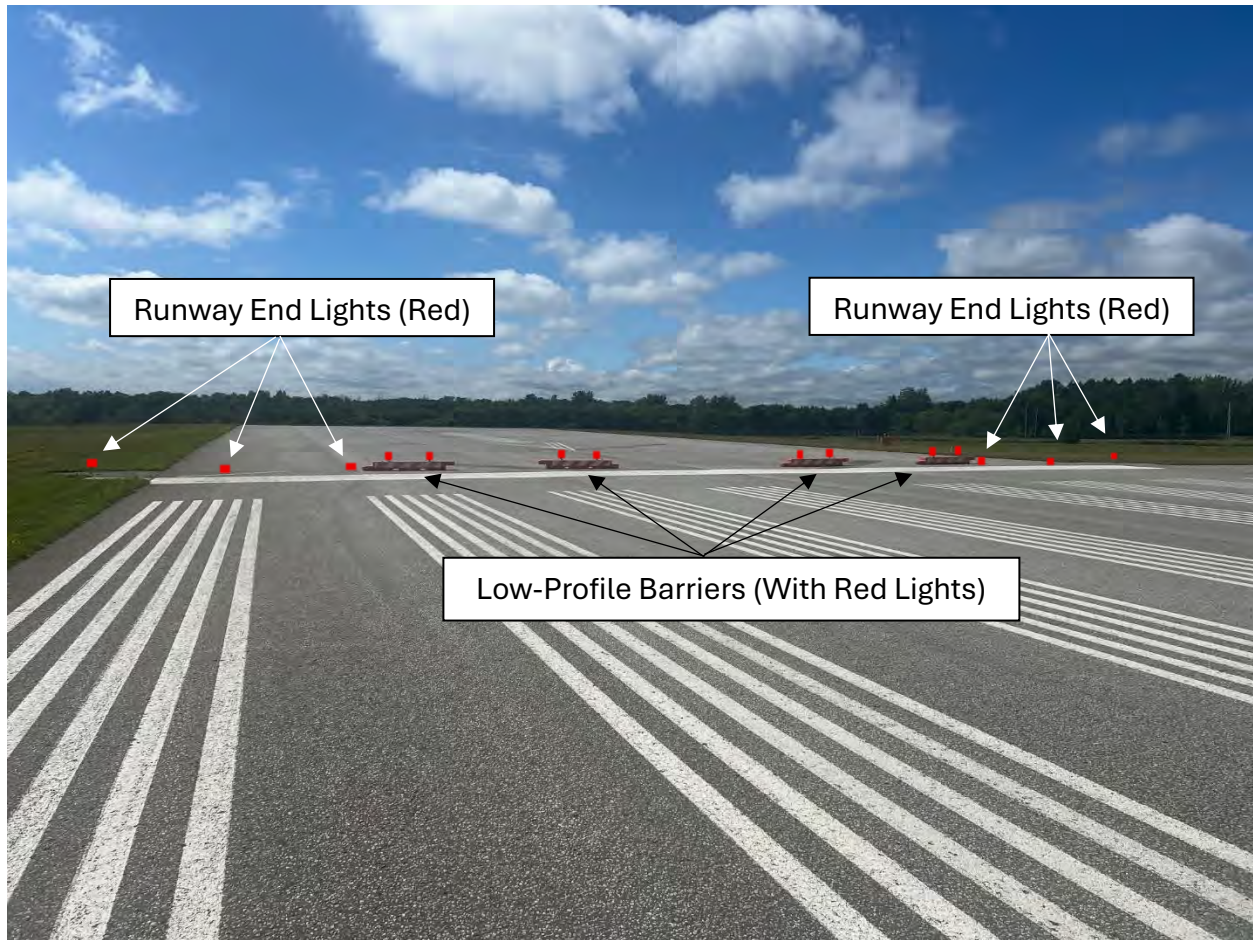
- a. On each drawing, the red line crossing the runway delineates the threshold
- b. Marker Boards will be in place
- c. Green Threshold Lights will be in place.



2. THE END OF EACH RUNWAY WILL BE MARKED AS FOLLOWS:

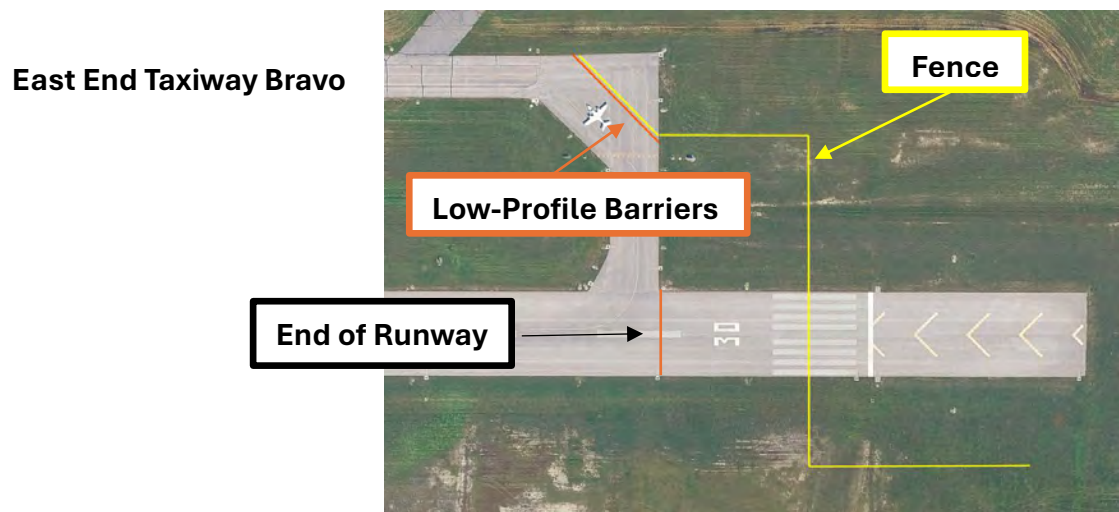
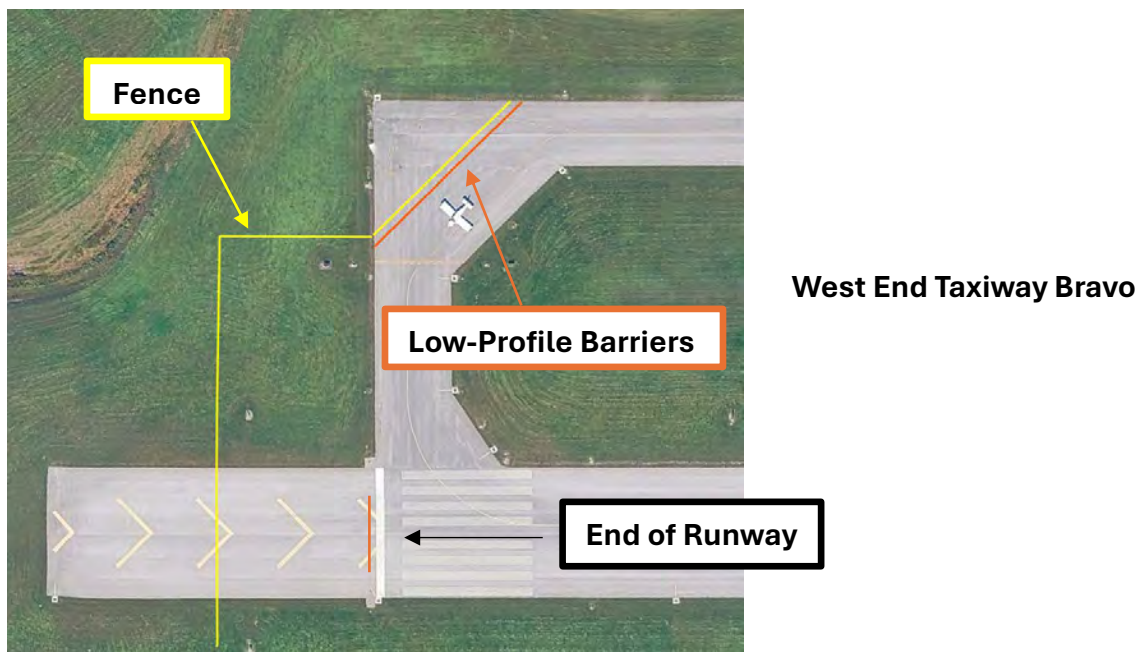
The end of the Runway will be marked with the following:

- a. The end of each runway will be at the Bravo intersection
- b. Red Lights will be in place
- c. Low-Profile Barriers will be in place



3. THE EAST AND WEST END OF TAXIWAY BRAVO CHANGES ARE AS FOLLOWS:

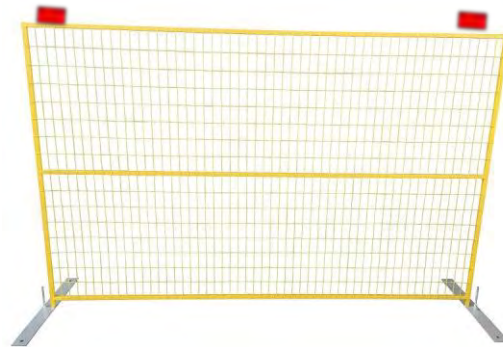
- a. Corners of Taxiway Bravo at East and West End Closed.
- b. Taxiway Bravo West of Enterprise and East of Runway 23 restricted to aircraft with a maximum wingspan of 43 feet.
- c. Closed areas delineated with Yellow Fence
- d. Closed areas delineated with Low-Profile Barriers and Red Lights



4. WORK AREAS:

All work areas where the equipment and staff will be working will be marked with the following:

- a) Yellow Fence
- b) Red Lights on top of yellow fence



5. THE FOLLOWING APPROACH LIGHTS WILL BE UNSERVICEABLE FOR THE DURATION OF THE PROJECT:

- a) Work Area Z: Runway 30 PAPI
- b) Work Areas A, B, C, D and E:
 - Runway 12 and Runway 30 PAPI
 - Runway 12 and Runway 30 Reels

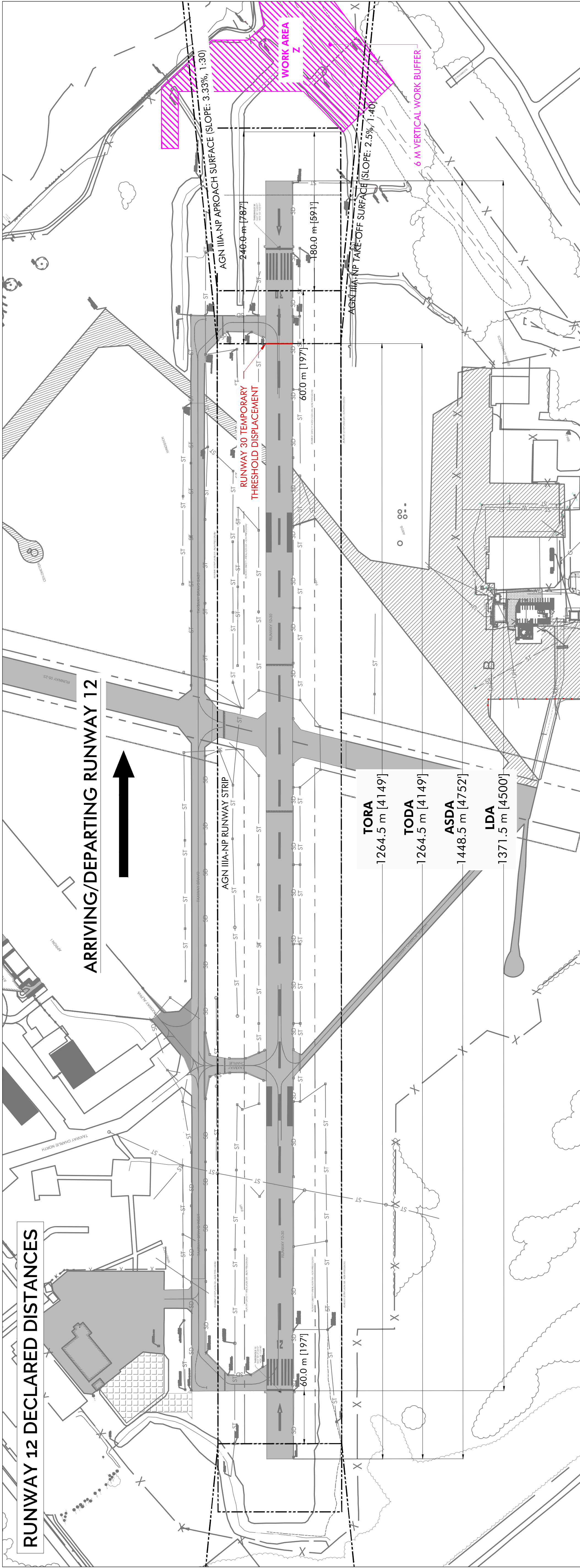
6. DECLARED DISTANCES:

Refer to the attached drawings for declared distances.

- **Work Area Z:** August 18, 2025 – September 01, 2025
- **Work Area A:** September 02, 2025 – October 10, 2025
- **Work Areas B, C, D, E:** Daily as needed (September 02, 2025 – October 10, 2025)

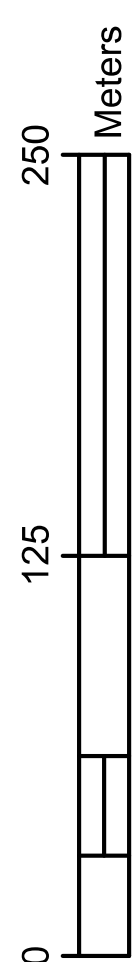
7. AIRCRAFT LIMITATION:

Runway 12/30 will be restricted to Piston and Turbo-Prop aircraft for Work Areas A through E.

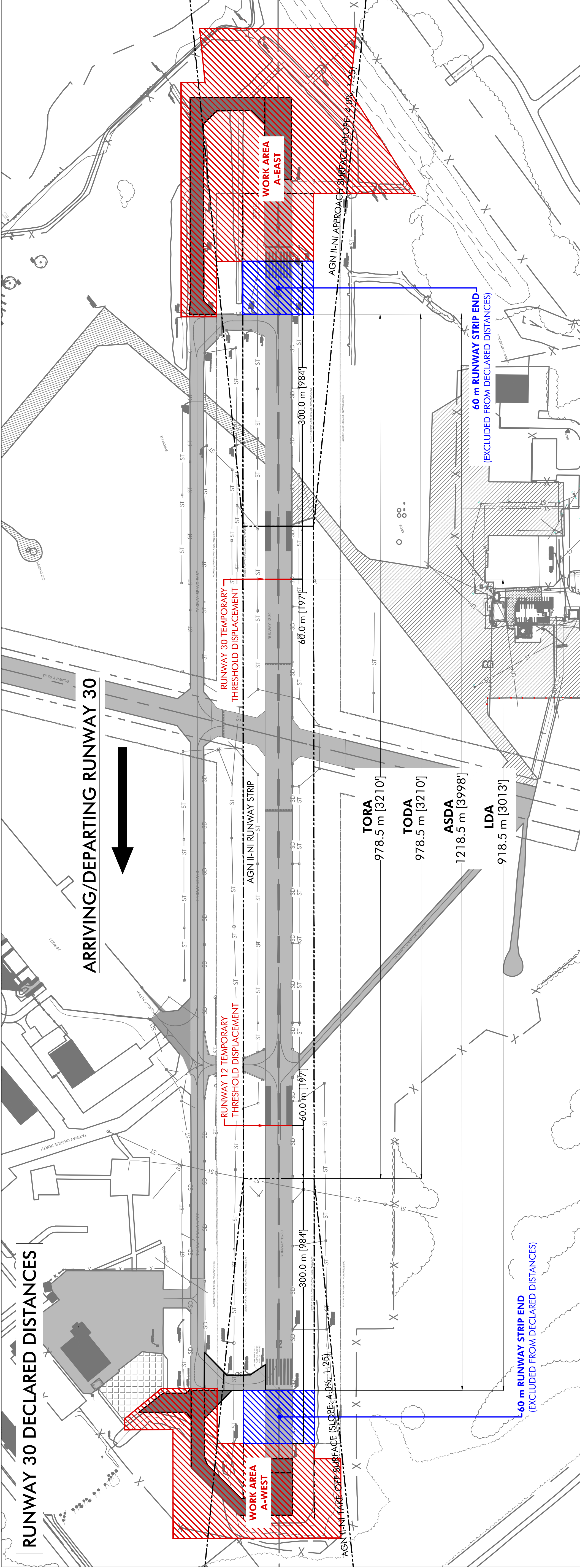
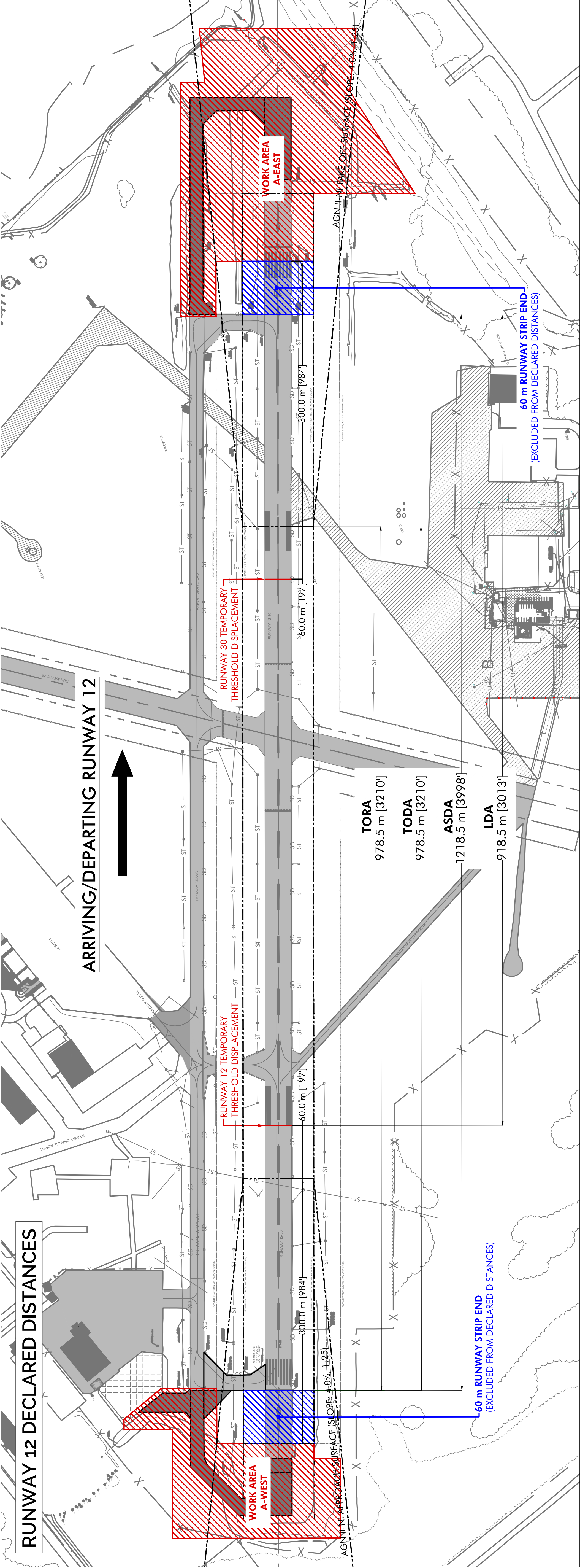
[illegible]

RWY 12	METRES	FEET
TORA	1,264.5	4,149
TODA	1,264.5	4,149
ASDA	1,448.5	4,752
LDA	1,371.5	4,500

RWY 30	METRES	FEET
TORA	1,431.5	4,697
TODA	1,431.5	4,697
ASDA	1,448.5	4,752
LDA	1,264.5	4,149

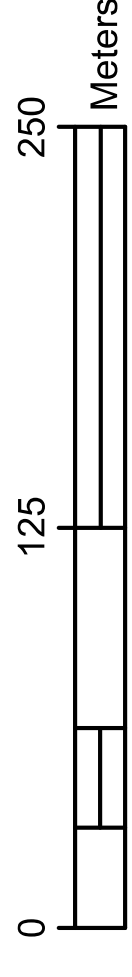


*FOR PLANNING PURPOSES ONLY

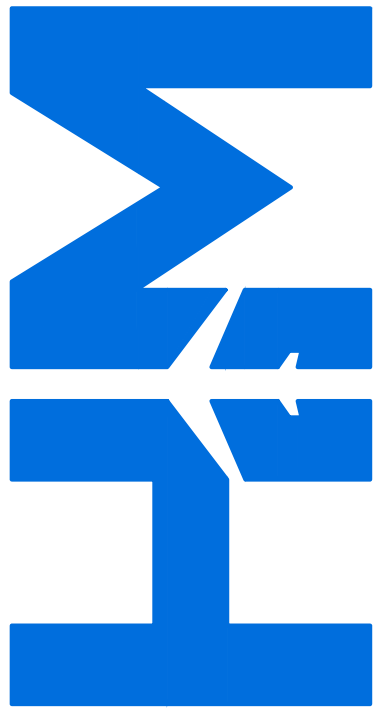


RWY 12	METRES	FEET
TORA	978.5	3,210
TODA	978.5	3,210
ASDA	1,218.5	3,998
LDA	918.5	3,013

RWY 30	METRES	FEET
TORA	978.5	3,210
TODA	978.5	3,210
ASDA	1,218.5	3,998
LDA	918.5	3,013



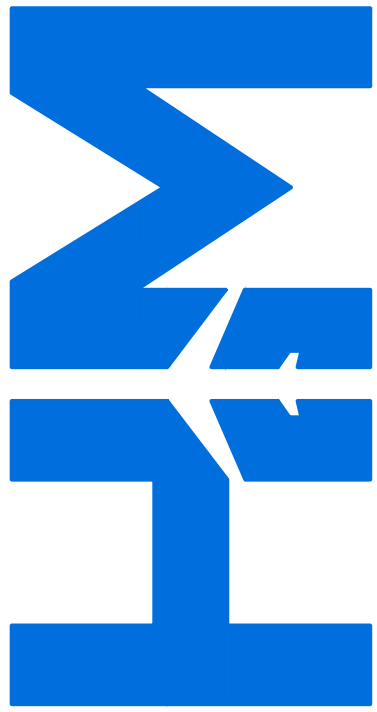
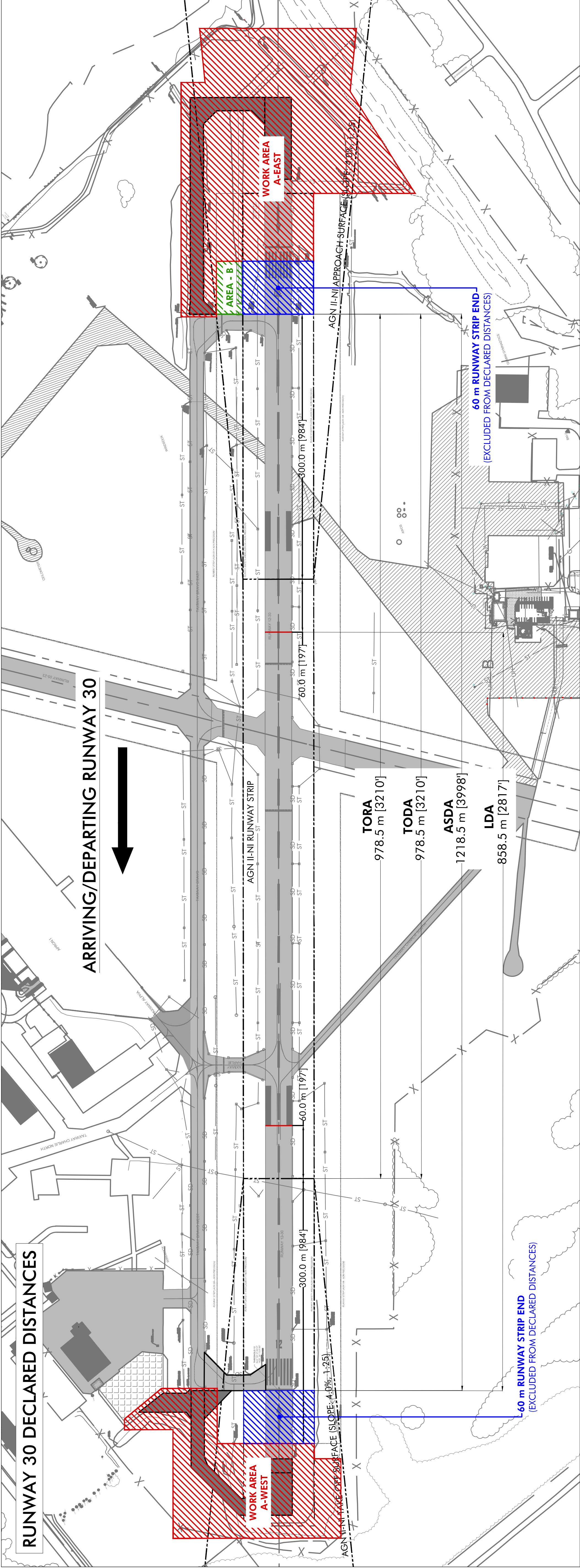
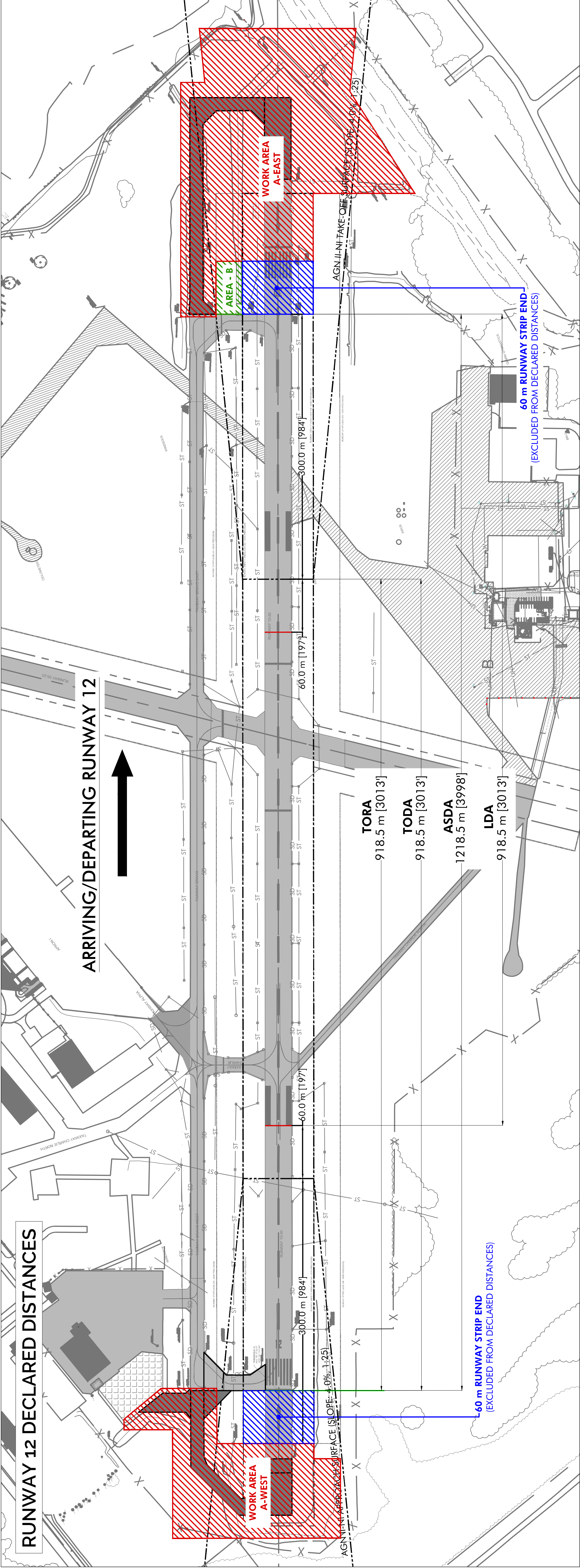
*FOR PLANNING PURPOSES ONLY



OSHAWA EXECUTIVE AIRPORT
RUNWAY 12-30
DECLARED DISTANCES
CONSTRUCTION - AREA A
(ROUNDED)



2025.06.20



OSHAWA EXECUTIVE AIRPORT

RUNWAY 12-30

DECLARED DISTANCES

CONSTRUCTION - AREA B

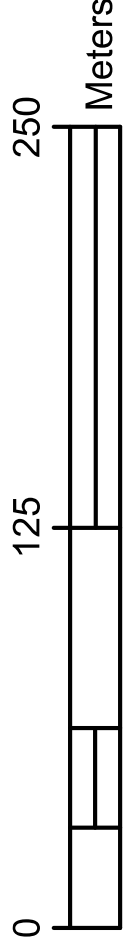
(ROUNDED)



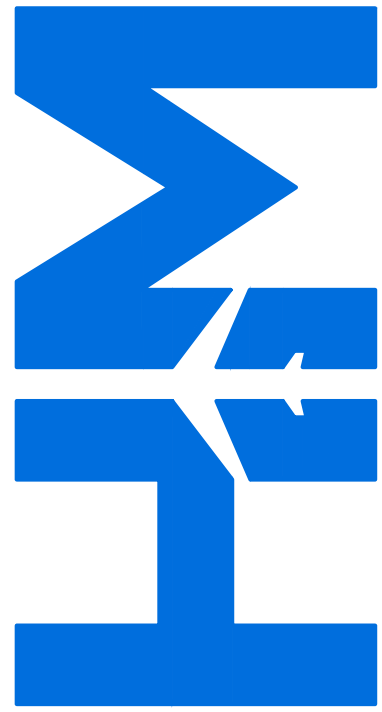
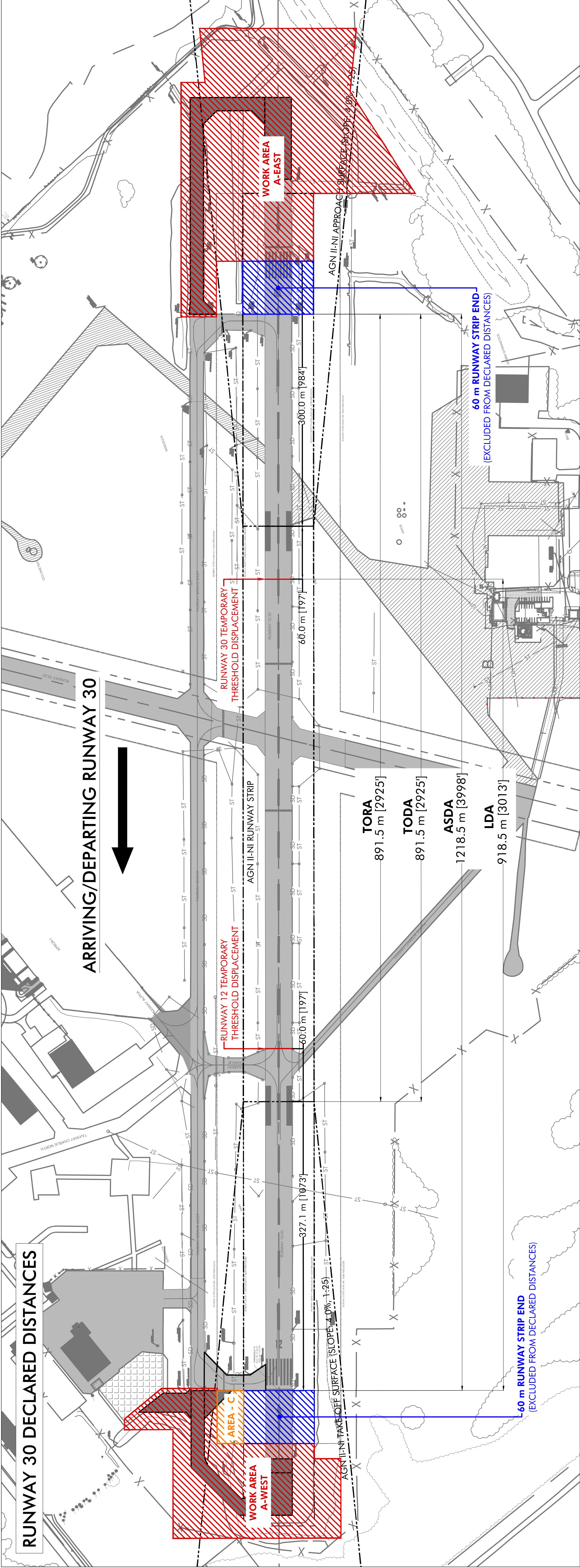
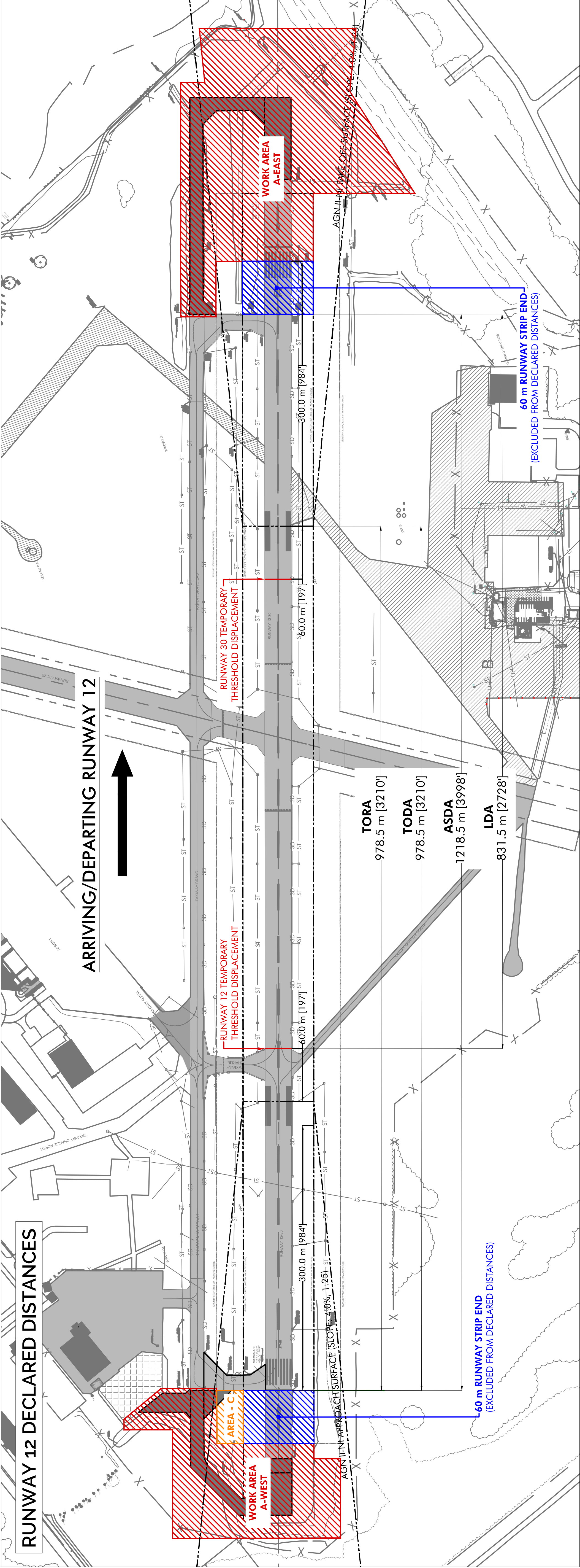
2025.06.27

RWY 12	METRES	FEET
TORA	918.5	3,013
TODA	918.5	3,013
ASDA	1,218.5	3,998
LDA	918.5	3,013

RWY 30	METRES	FEET
TORA	978.5	3,210
TODA	978.5	3,210
ASDA	1,218.5	3,998
LDA	858.5	2,817



*FOR PLANNING PURPOSES ONLY



OSHAWA EXECUTIVE AIRPORT

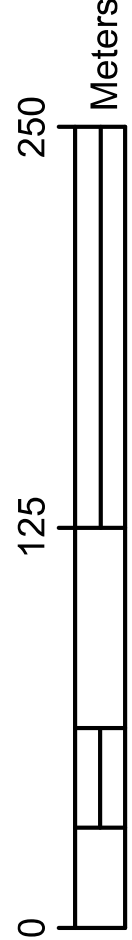
RUNWAY 12-30
DECLARED DISTANCES
CONSTRUCTION - AREA C
(ROUNDED)



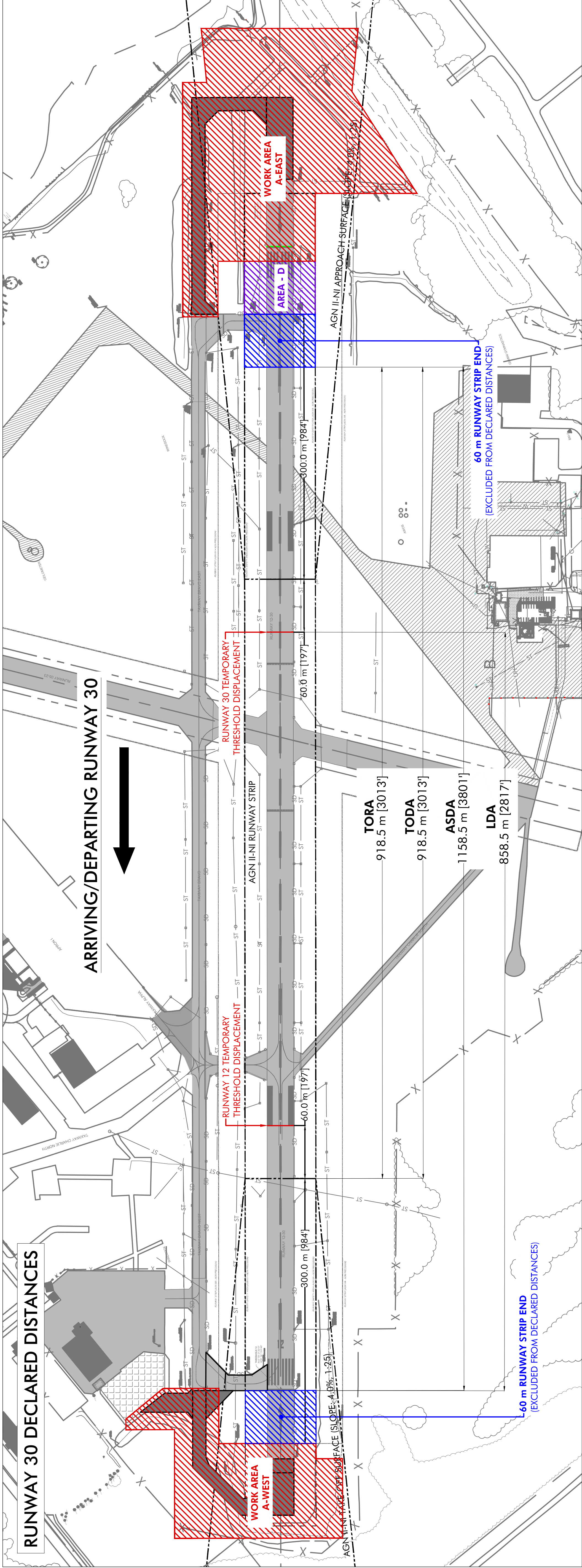
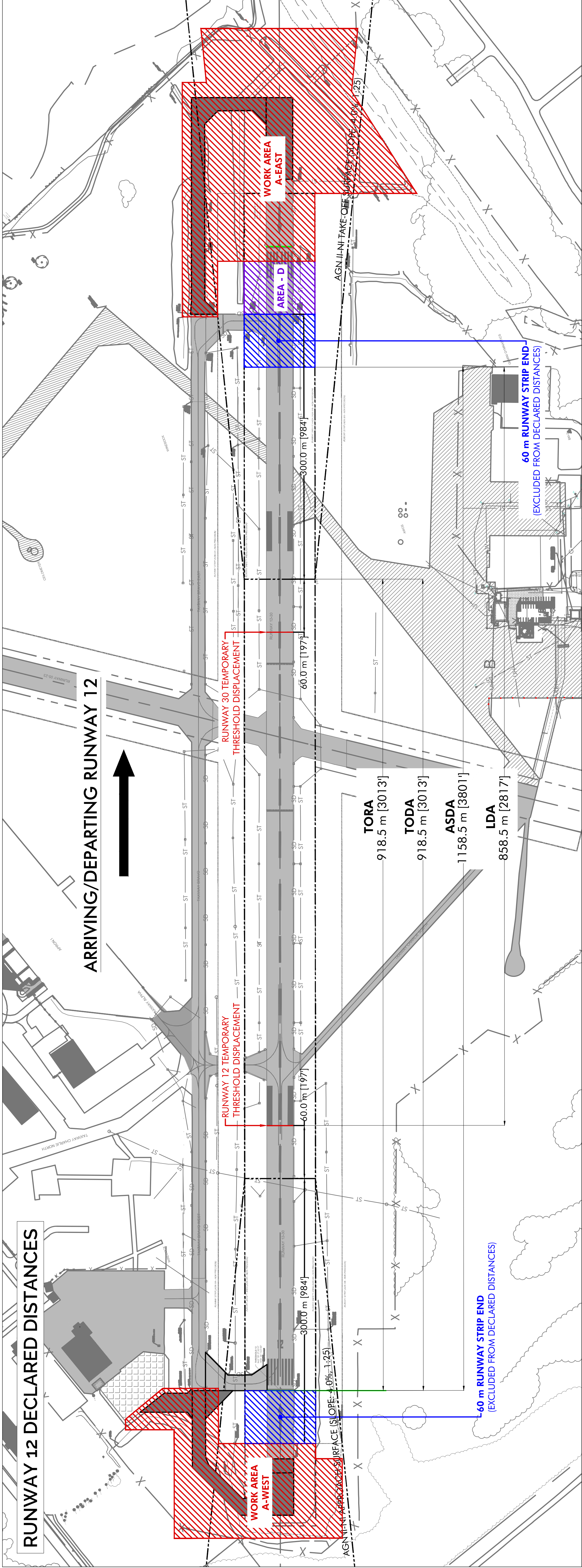
2025.06.27

RWY 12	METRES	FEET
TORA	978.5	3,210
TODA	978.5	3,210
ASDA	1,218.5	3,998
LDA	831.5	2,728

RWY 30	METRES	FEET
TORA	891.5	2,925
TODA	891.5	2,925
ASDA	1,218.5	3,998
LDA	918.5	3,013

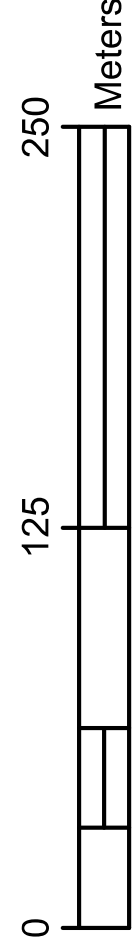


*FOR PLANNING PURPOSES ONLY

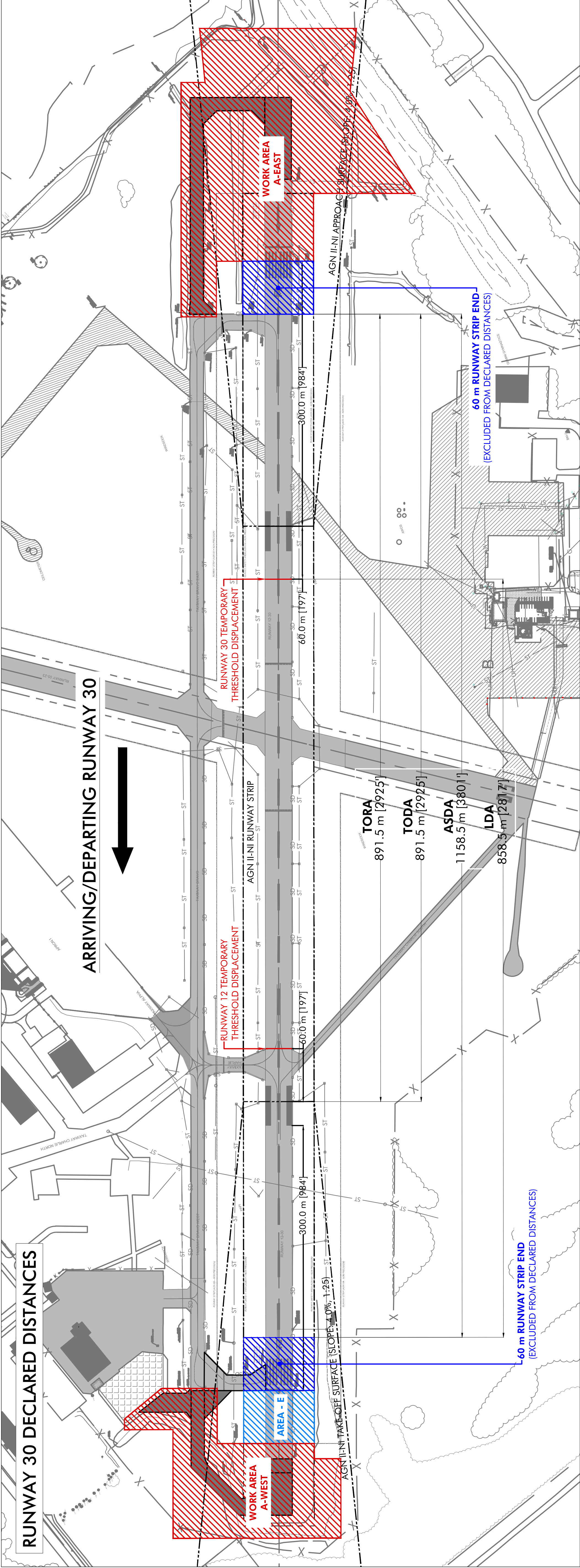
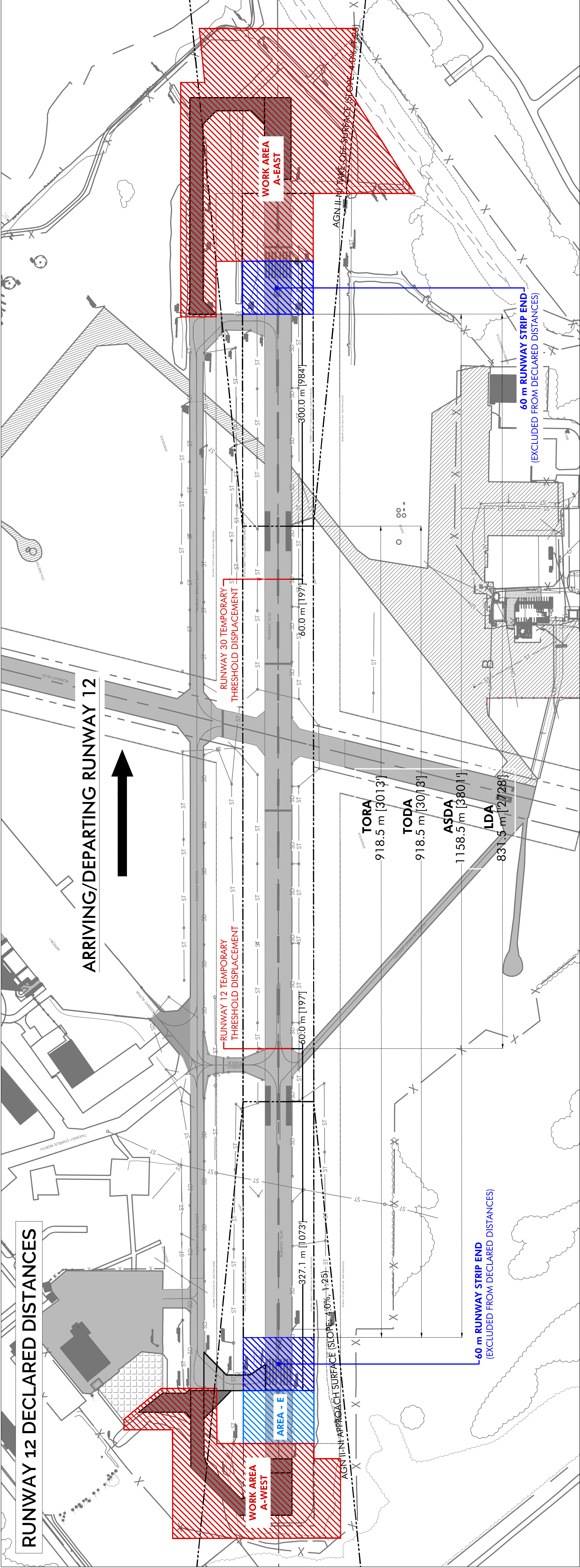


RWY 12	METRES	FEET
TORA	918.5	3,013
TODA	918.5	3,013
ASDA	1,158.5	3,801
LDA	858.5	2,817

RWY 30	METRES	FEET
TORA	918.5	3,013
TODA	918.5	3,013
ASDA	1,158.5	3,801
LDA	858.5	2,817

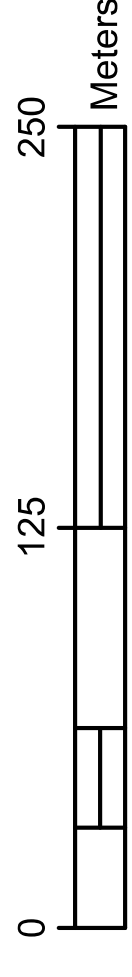


*FOR PLANNING PURPOSES ONLY

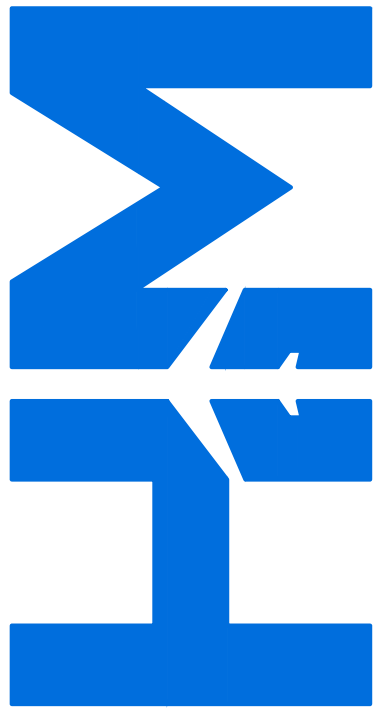


RWY 12	METRES	FEET
TORA	918.5	3,013
TODA	918.5	3,013
ASDA	1,158.5	3,801
LDA	831.5	2,728

RWY 30	METRES	FEET
TORA	819.5	2,925
TODA	819.5	2,925
ASDA	1,158.5	3,801
LDA	858.5	2,817



*FOR PLANNING PURPOSES ONLY



OSHAWA EXECUTIVE AIRPORT
RUNWAY 12-30
DECLARED DISTANCES
CONSTRUCTION - AREA E
(ROUNDED)



2025.06.27